

Paper + Design

tabletop®

Environmental Statement 2020



Environmental Statement 2020

Paper + Design GmbH tabletop

according to the EU regulations No. 1221/2009 EMAS III,
No. 2017/1505 and No. 2018/2026



Page Contents 

7	Preface
8	Company portrait
9	Production process and technical data
12	Company policy
14	Eco-management and eco-audit system
17	Environmental aspects
18	Input- and Output data
24	Environmental program and environmental targets
26	Internal and external communication: Contacts
26	Validation and presentation of the following environmental statement
27	Terms and abbreviations



+

+

Preface



Dear reader,

With the updated environmental statement we commit ourselves to a responsible and sustainable acting. Thus we would like to set benchmarks for our business partners in order to be able to produce high quality products further on.

Against the background of increasing environmental challenges, advanced management systems are now firmly integrated in our operational procedures. They are an important basis for the systematic and continuous enhancement of corporate environmental performances, quality performances and social benefits.

Besides ISO 9001, ISO 14001, IFS HPC, BRC, SWAN, SMETA and the FSC®certification, the EMAS-III validation is an important tool for us to create transparency and reliability for our provision of services and product quality. The past few years have shown that these instruments are having an important influence on the motivation of our employees and thus also on the customer satisfaction.

With the present updated environmental statement 2020 we continue on the path we have embarked on in the direction of environmental responsibility and sustainability. The present environmental statement includes the proof on performed environmental services of the past 5 years. The year 2020 was kept at a high level in terms of environmental performance despite considerable restrictions in the course of operations and production. Organizational and technical measures could, however, only partly be implemented according to plan.

Beside the quantitative information about the environmental effects at the site, specific programs are executed which target on a further enhancement of the environmental and thus of the operational performances.

Wolkenstein / district Hilmersdorf, January 2021

Joachim Steeg

Managing Director Operations Paper + Design GmbH tabletop



Company portrait



Our site

The site of the Paper + Design GmbH tabletop (hereinafter also called „Paper + Design“) is located in the district Hilmersdorf of the city of Wolkenstein in the district Erzgebirgskreis.

The area with a surface of about 50'000 sqm is shown as mixed use area and provides connection to the federal highways B174 Chemnitz / Marienberg and B101 Annaberg-Buchholz / Dresden.

Beside other smaller industries and individual residential development, the premises of the company Paper + Design is located in the middle of forests and green spaces. With regard to water rights, the protective class III of the drinking water protection area of the barrage Neunzehnhain applies.

Paper + Design currently do not operate any plants requiring authorisation according to the BImSchG (=German Pollution Protection Act).

At the premises of Paper+Design GmbH tabletop the independent company Flexogravur GmbH is located in a separate operating building. The company Flexogravur GmbH delivers printing plates for the production process and is not within the scope of EMAS validation. The same applies to a private property, which is enclosed on all sides by the Paper + Design GmbH tabletop.

Paper+Design GmbH tabletop

The company stands for quality-conscious production of napkins and table cloth. Being one of the market leaders in its branch, the Paper+Design GmbH tabletop attaches importance to outstanding quality and innovative design. Designs made by established designers guarantee that the current trends are reflected in numerous colour and worlds of motifs.

The commitment of our about 235 employees is the condition for this service. With a balanced combination of young employees on the one hand and employees having an experience for decades on the other hand, the company operates a concept which strives for success in the future.

The environmental protection is the most important factor in the production and firm part of the company philosophy. In 2008 we have made our environmental measures check for the first time by an official audit according to the standard 14001 and the EMAS regulation. Also in the future we will comply with the high requirements of the operational environmental protection. In annual audits applied processes are on trial and thus we elaborate ecologically practical measures of improvement.

All handling takes place in a legal frame. The identification of relevant legal regulations and provisions as well as their observance are a matter of fact for us and represent the basis of our actions. Relevant areas of environmental law are waste law, emission law, hazardous substances law and water law.

Paper + Design has been a subsidiary of the DUNI Group since 2014.

However, this environmental statement only applies to the site in Wolkenstein.

In 2018, the „Blue Angel“ eco-label was successfully applied for a product series. By using recycled fibers instead of virgin fibers, Paper + Design contributes to the conservation of wood resources and the reduction of waste.

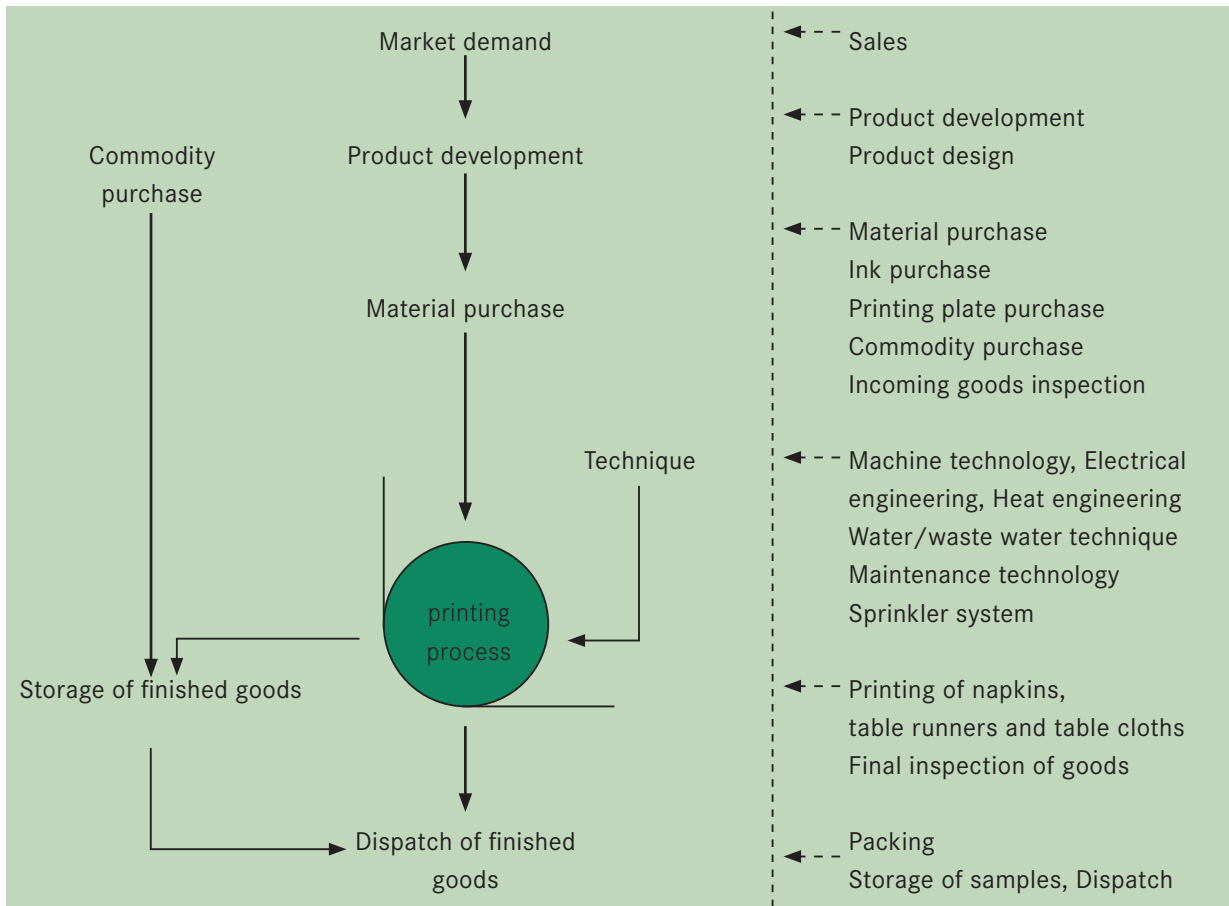
It is our target to continuously improve environmental protection and occupational safety in coordination with production and quality management.





Production process and technical data

Production process



Technical data

Flexo printing

Flexo printing

The Flexo printing is a direct relief printing. We are using printing machines which offer an impression cylinder (satellite construction) and machines of multi-cylinder compact structure (each printing mechanism possessing its proper impression cylinder). It is possible to use up to eight printing mechanisms for each machine.

We are using print cylinders made of laser-engraved blanket cylinders where the images to be printed are embossed on the printing plates. The printing ink which we are using is of a water-based nature. The colour is transferred via an anilox roller on the embossed elements of the printing plate (sleeve) and

there it is directly transferred to the printing substrate. We are using print works equipped with dip roller and scraping printing mechanisms.

Digital printing

The difference to flexo printing is that there is no printing form necessary. The print design is transferred directly from the computer to the industrial inkjet printer with 4 water-based pigment inks. The method enables personalized printing on napkins in small and very small batch sizes. By lower setup times and elimination of the platemaking costs, the digital printing for small print runs is more flexible and faster than the conventional flexographic printing.

Napkin and handkerchief production

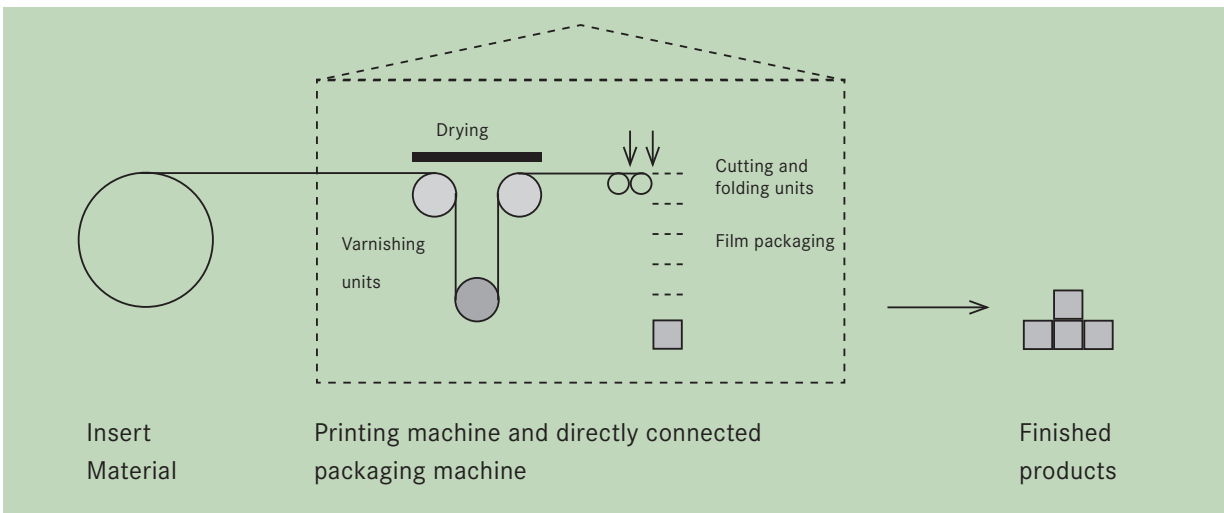
The napkin and handkerchief production is performed in a complete in-line procedure with the following sequence:

- Printing
- Embossing
- Folding
- Perforating
- Sorting
- Packaging

12 printing machines including 8 inking units each for

- **Napkins** (Printing material: tissue, Airlaid)
Napkins 25x25 cm to 42x42 cm 1/4 fold;
Buffet napkins 33x33 cm to 40x40 cm 1/8 fold;
Napkins round/ embossed 1/4 fold;
Guest towels 40x33 cm 1/6 fold

- **Handkerchiefs** (Printing material: tissue)
Printed handkerchiefs 22x21.5 cm 1/8 fold



1 digital printing machine for

- **Napkins** (Printing material: tissue, Airlaid)
Napkins 33x33 cm 1/4 fold

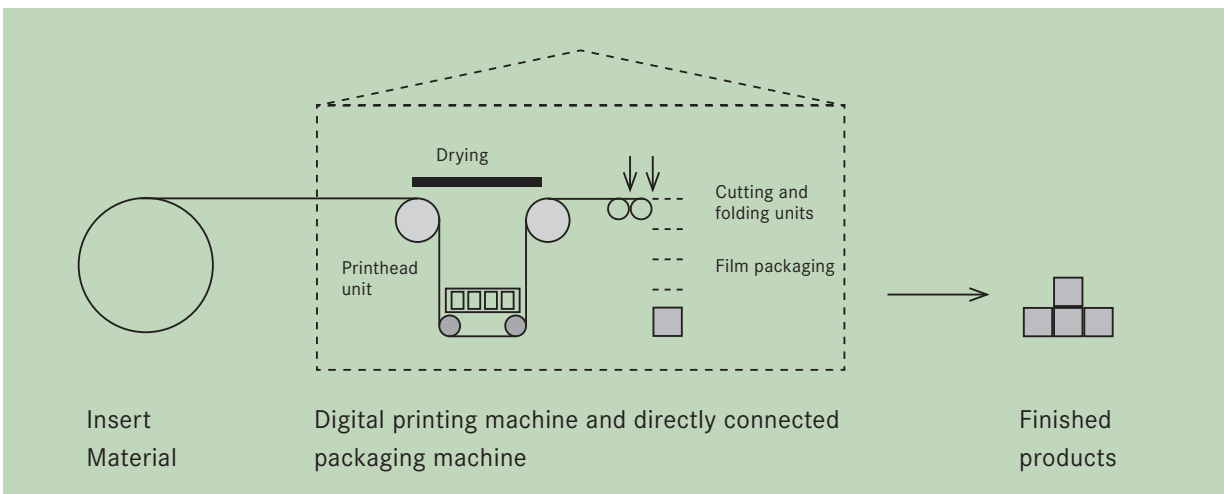




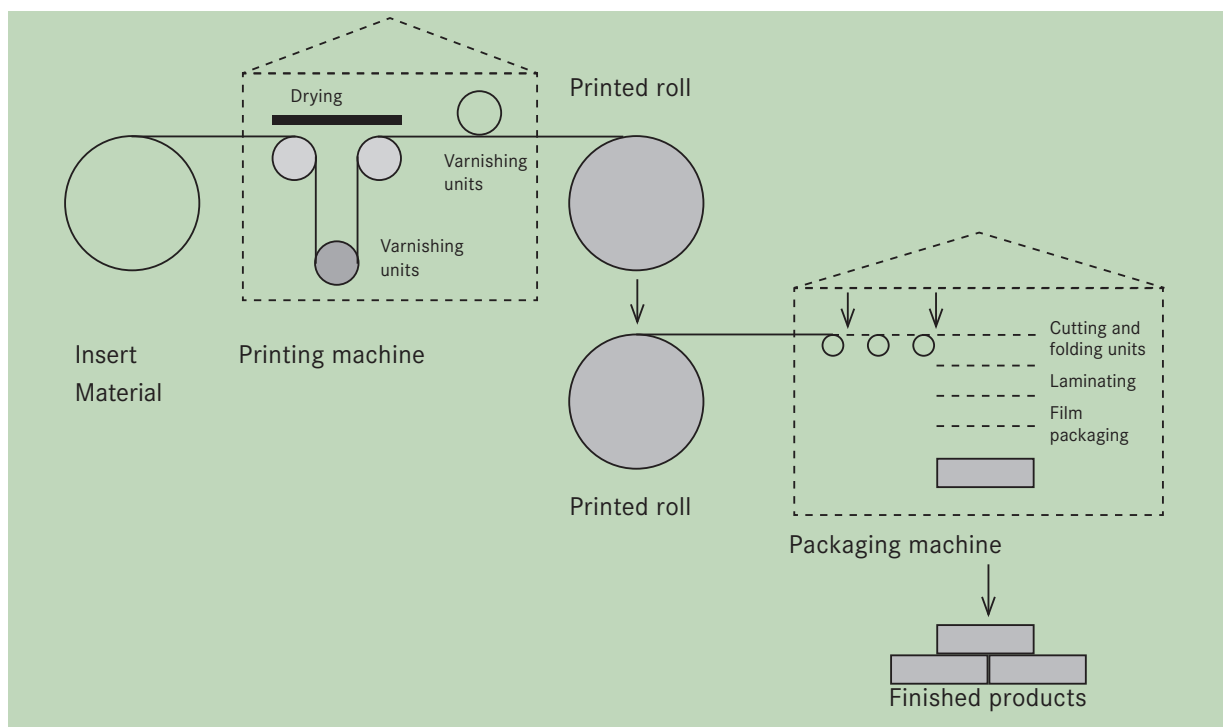
Table cloths and toilet paper production

Table runners, table cloths and toilet papers are printed from roll to roll. In the second working step the in-line procedure is as follows:

- Embossing
- Rolling
- Folding / Perforating
- Laminating
- Sorting
- Packaging

1 printing machine equipped including 6 inking units and varnishing for

- **Table cloths** (Printing material: paper, Airlaid non-woven) Table cloths with a widths from 80 cm to 1.60 m; variable length
- **Table runners** (Printing material: Airlaid, non-woven, paper, flax) Table runners with a width up to 50 cm; Place mats 40x30 cm; Rolled or folded table runners; Rolled or perforated place mats
- **Toilet paper** (Printing material: tissue) Printed toilet paper with a width of 10 cm, 200 sheet per roll



Sorting and punching work

As a further step, various articles from our product portfolio can be sorted into displays or customer-specific packaging solutions.

In the field of napkin production there is the possibility of punching different shapes out of napkins.

The production process takes place in 3 steps:

- Print
- Punching
- Packaging

Logistics

- Fully automatic high-self storage
- Conventional stocking in a pallet storage
- Dispatch



Company policy

Beside the operational environmental protection, our company policy also includes standards for quality assurance, social responsibility, risk assessment as well as occupational safety are embedded herein. The company policy is regularly checked by the managing director and, if necessary, adapted to current conditions.

Our acting is focused on customer satisfaction with regard to the manufacturing of our products and the services included herein. We control our development, offer and implementation process and are anxious to continuously improve them. All employees are counting on a trusting relationship and partnership with our customers, suppliers and other interested groups.

The corporate policy of the Paper + Design GmbH tabletop equally adjusts to the following criteria:

Customer orientation

We are anxious to offer the best possible quality to all our customers according to their requirements. An important part of our company is to fulfil these customer requirements. They are internally communicated openly and reliably implemented by the structural units. To do so, it is necessary to maintain reliable process structures within the company. The customer decides, if we have done an excellent work.

Reliability

The reliability with regard to quality and adherence to delivery dates are our highest priority. We have committed ourselves to continuous enhancement by quality monitoring as well as to use best economically feasible techniques.



Close Cooperation

Close cooperation between our customers, suppliers and employees differentiates our work. In the system each employee does his best in his area of responsibility in order to attain best results. From discussions with our customers and suppliers as well as due to our own proposals we derive improvement potentials and implement them.

Focus on results

We commit ourselves to the performance principle. Innovations may help us to master the challenges and to reduce effort. In this way, the interaction of performance and innovation is leading to a better result. The focus of occurring product risks is based on the interests and use of the final customer. A continuous analysis of processes is necessary for identification, validation and control of risks. In principle, we are committed to minimizing/decrease risks. The risk management system and its control is a management responsibility and continuously updated. We maintain the risk management system by continuous process control.

Law-abidance

All handling takes place in a legal frame. The identification of relevant legal regulations and provisions as well as their observance are a matter of fact for us and represent the basis of our actions. We advocate a fair competition with our competitors and denounce and consequently pursue any incidents in the field of giving or accepting of undue advantage and corruptibility in the frame of our overall business activity.

All employees are requested to report cases of possible corruption and violation of ethical rules immediately. This message may be anonymous sent to the Duni HR-Director (Human Resource) or Duni CFO (Chief Financial Officer) – telephone +46 40 10 62 00.

Environment

Paper + Design GmbH tabletop recognises to protect our environment and the sustainable manufacturing of products. We commit ourselves to implement the management system to continuously develop the occupational environmental protection including the application of best economically feasible technique. The control and application security and environmental compatibility of environmentally relevant processes is performed by systematic self-monitoring according to accredited criteria.

The preventing environmental protection is a wide field of activity. Environmentally relevant processes are checked and monitored regarding their effects. This ranges from product development, purchasing of raw materials and auxiliary means passing the production process up to the use of environmental friendly packaging materials in the dispatch. The aim is a reduction of environmental pollution as well as continuous enhancement with regard to the occupational environmental protection.



The monitoring and evaluation of relevant environmental data plays an important role in the occupational environmental protection.

Occupational safety and health protection

For us safety at work is an important part of good work. We support the sense of responsibility of all employees to behave conscious and safe at their working place. We support this effort in planning and monitoring the working environment taking ergonomics, occupational and health protection into consideration.

We respect protection of health and well-being of our employees at their working place as basic needs. We feel obliged to implement precautions in order to avoid accidents and work-related diseases, thus minimizing the impairment of safety and health of all employees and third parties and to guarantee and improve the safety and health protection.

Employee orientation

Qualified employees are the most valuable asset of a company. The employee suggestion system guarantees that all employees can actively contribute to the implementation and enhancement of a company through a wide range of initiatives.

The statutory framework of the articles 1 through 4 of the German constitutional rights (protection of human dignity, freedom, equal rights, freedom of belief), the related legislation as well as the Code of Conduct are the basis for our staff orientation. Furthermore, we expressively admit ourselves to prohibit children and youth work, any kind of forced labour, unequal treatment, harassment, intimidation or discrimination. Our self-image consists in being successful as a result of the mutual social cooperation. All employees have the right to fair, polite and respectful treatment by superiors and colleagues. A cooperative and friendly working atmosphere is actively supported by the management.

Our Code of Conduct is based upon the Ethical Trading Initiative (ETI) Base Code. For more information go to www.ethicaltrade.org

Public

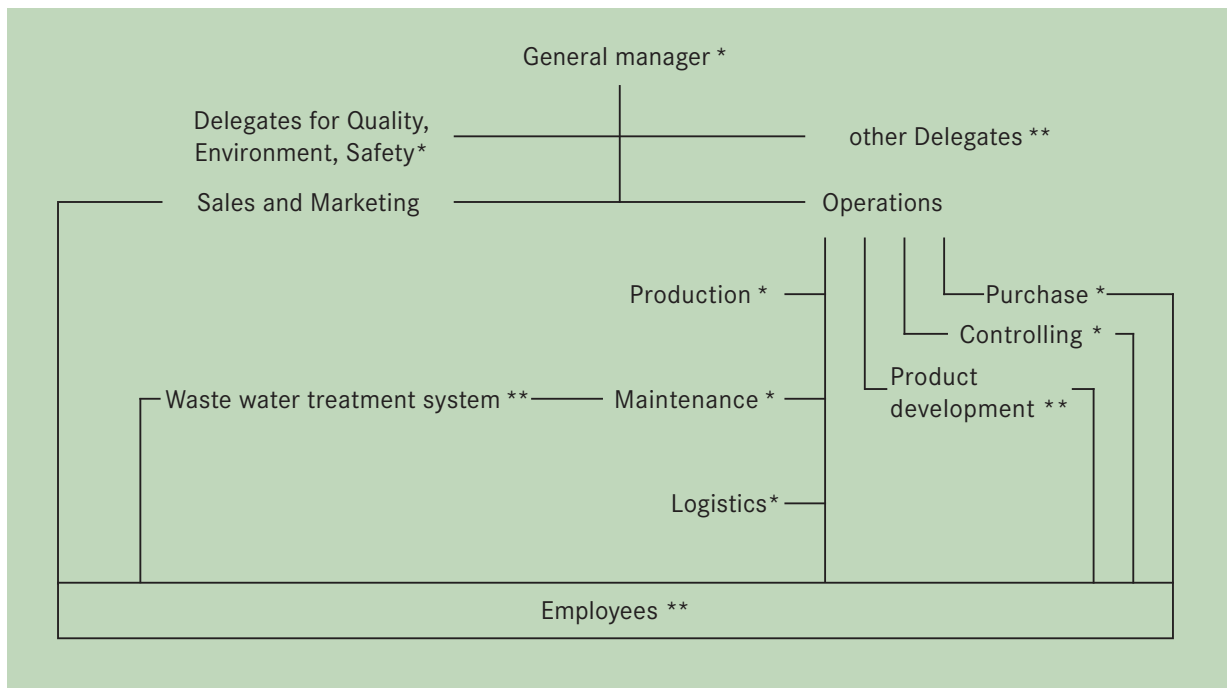
We are at the disposal of the public, authorities and interested parties conducting an open and constructive dialogue with regard to questions of our business performances.

In all activities in the company people are in the main focus - being customer, supplier, employee, business partner or the corporate field.



Eco-management and eco-audit system

The following organizational chart of the Paper+Design GmbH tabletop will give you an overview regarding the responsibilities in the organizational environmental management.



* Permanent employees in the leader board

** Non-permanent employees in the leader board: employees waste water treatment, company physician, person responsible for customs, occupational safety, data protection, fire protection

A high-performance management system is necessary to implement the company policy including the environmental obligations resulting hereof and to extend the attained environmental standards. The implementation of the management system is taking place on the basis of the ISO 14001 and the (EC) regulation number 1221/2009 EMAS III. We commit ourselves to a sustainable and continuous development of the operational environmental protection.

Organization of the operational environmental protection

The overall responsibility for the management system is the responsibility of the management. He is supported by the management delegates and by the heads of departments regarding all environmental issues. The management delegate is responsible to maintain and further develop the management system.

Environmental management documentation

The environmental management system is described in operational instructions. These define the responsibilities and operations of environmentally relevant processes and compile the information and documents necessary to maintain and develop the environmental protection of the company.

All our documents can be accessed by our employees via the Intranet.

The management delegate is responsible for adapting the manual to the current guidelines of the company policy. In 2016 the manual has been adapted to the requirements of the standard ISO 9001: 2015 and ISO 14001: 2015. At the same time, FSC, IFS HPC and SMETA standards as well as the requirements of SWAN certification are integrated.





Environmental protection as executive functions

The inclusion of the environmental protection in the monthly meetings of the executive committee has become a matter of course. Current information, evaluations and tendencies included, measures are taken and projects are passed. Thus it is guaranteed that all members of the management as well as the head of department participate in the developments of the internal environmental protection.

Training, awareness and competences

It is of a great importance for a continuous improvement of the management system to exchange information in a reliable way. Being aware of this fact, we have established defined information structures in the Paper+Design GmbH tabletop. All employees can directly participate actively in the development of the existing system via the idea's management. The demands of a learning organization should be realized at any time.



Regular information meetings serve to build up competence, to motivate and to deepen relevant environmental knowledge. Due to the membership in the environmental alliance Saxony we have a network for cross-sector cooperation in the environmental protection.



Internal audit and management review

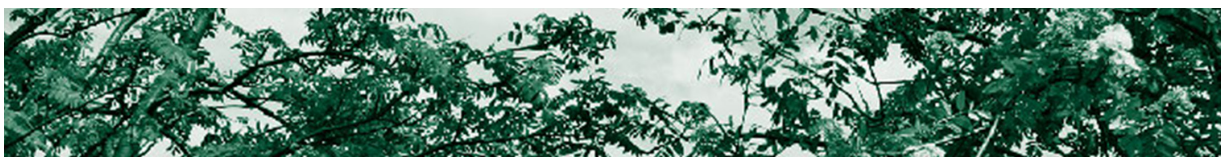
We perform internal audits every year to determine the actual situation and to continuously improve and optimize our course of actions. Besides the permanent self-monitoring at the workplace they serve to comprehensively determine the current status in the environmental protection of the Paper+Design GmbH tabletop.

For the year 2018, audits have been carried out according to internal planning.

The results revealed that all employees are working on continuously improving the environmental performance and the legal requirements are met.

As a result of the annual internal environmental audits, the managing director assesses the environmental management system and elaborates the management review. This is the assessment of the achieved environmental objectives as well as the assessment to meet statutory requirements. Moreover, the regulations are adopted to determine the further approach in the operational environmental management by the operational planning of measures in the frame of management meetings of the company management.

Environmental aspects



Due to the operation and the related actions the Paper+Design GmbH tabletop inevitably act on the environment.

The assessment of our environmental aspects is carried out in the form of an A-B-C scheme in accordance with the requirements of Regulation (EC) No 1221/2009 EMAS III on the basis of the following assessment criteria:

- the environmental damage potential
- the extent and frequency of environmental aspect
- the importance for interested parties and employees
- the existence of requirements from legislation

Direct environmental aspects

It remains our task to influence direct and indirect environmental aspects in such a way that environmentally friendly production is possible. Direct environmental aspects are related with activities, products and services of Paper + Design, which can be influenced and monitored. They are controlled by internal management decisions.

Indirect environmental aspects

Indirect environmental aspects are the result of the interaction of Paper + Design with third parties. They cannot be extensively influenced by companies and Paper + Design can only influence business partners in order to attain an improvement of the environmental protection.

Assignment of environmental aspects at Paper + Design

Environmental aspects at Paper+Design GmbH tabletop	Environmental aspects		significant environmental aspects
	direkt	indirekt	
Use of raw materials	✓		✓
Energy consumption	✓		✓
Waste	✓		✓
Water supply / waste water	✓		✓
Use of hazardous substances	✓		✓
Appearance of emissions	✓		
Land utilisation	✓		
Environmental performance of our suppliers and customers		✓	
Recyclability of products	✓		✓
Traffic / logistic		✓	
Legal regulations and ordinances		✓	✓
Emergency prevention	✓		✓

We would like to attain a transparency of our environmental activities. To do so, our input and output figures are listed and explained on the following pages.

Input and Output key figures



Input key figures	Unit	2016	2017	2018	2019	2020
Printing substrates ¹	t	7,366	7,116	6,864	6,179	5,181
Printing inks	t	604	596	560	512	401
Film	t	174	211	190	163	135
Paperboards	Mio Stk	6.87	6.70	6.73	5.95	5.15
Electric current	MWh	3,136	2,950	2,881	2,730	2,288
Gas	MWh	1,175	1,268	1,354	1,281	1,158
Diesel	MWh	186	209	203	149	119
Drinking water	m ³	1,901	1,488	2,438	2,707	2,770
Industrial water	m ³	2,790	2,829	1,416	860	367

Output figures

Output figures	Unit	2016	2017	2018	2019	2020
Product quantity	t	7,561	7,319	7,036	6,275	5,221
Non-hazardous waste						
For recycling ²	t	767	809 ³	768	743	654
For disposal	t	0	0	0	0	0
Hazardous waste						
For recycling	t	19	14	6	1	6
For disposal	t	0	0	0	0	0
Annual Emissions from natural gas and diesel						
CO ₂	t	296 ⁴	323 ⁴	337	310	272
CO	t	21	23	24	23	21
NO _x	t	178	192	205	194	175
SO ₂	t	1.27	1.37	1.46	1.38	1.25
PM	t	0.43	0.46	0.54	0.57	0.52

Emissions data collect data from natural gas and diesel consumption. Other emission values as well as greenhouse gases, which are noted in the EMAS III regulation (z.B. CH₄, N₂O, HFKW, PFC, NF₃, SF₆) are not relevant.

Biological variety

Sealed area	m ²		33,000	33,000	33,000	33,000
Green area	m ²		17,000	17,000	17,000	17,000

¹ Printing substrates are tissue, paper, Airlaid, non-woven

² The waste groups Tissue, Paper, Airlaid, Films, cardboards and industrial wastes were recorded in tons; the waste group cores were recorded in m³ and converted according to check weighing.

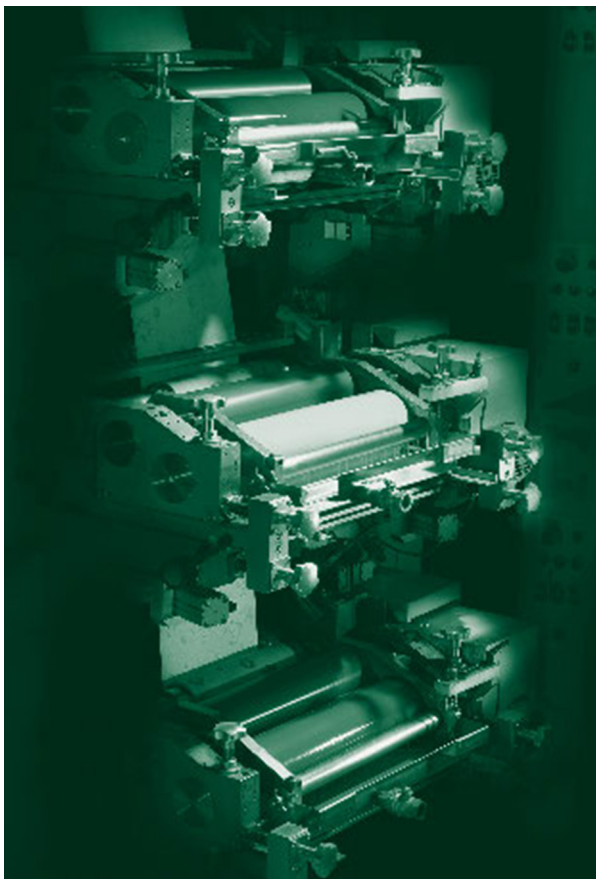
³ Value subsequently corrected

⁴ Values subsequently corrected, based on more accurate calculations of CO₂ emissions

PU Production unit (1'000kg product)

Explanations of the input key figures

We are using regrowing as well as non-renewable raw materials and materials for our production.



Printing substrates

Printing substrates are tissue, paper, Airlaid, non-woven and flax as well as composites of the aforementioned materials. The main printing substrate of the production is issue. The pulp is whitened chlorine-free (TCF). All our substrates have been purchased since 2018 as FSC® material. The printing substrate paper consists of 100% scrap paper.

Ink

The used flexo printing inks are of water-based nature and comply with the demands of the European Union and of the German standard for products being in contact with food. We apply great importance to the fact that such preconditions are confirmed by our suppliers in terms of declarations of no-objection or certificates. We

are continuously working on the improvement of our colour systems taking into consideration the current state-of-the-art of science and technique.

Film

The products are packed with film. The films comply with the demands of the food industry which are determined by the regulations of the EU-VO (EC) No. 1935/2004 Framework regulation for articles of daily use and the national regulations (Foodstuffs and Commodities Act).

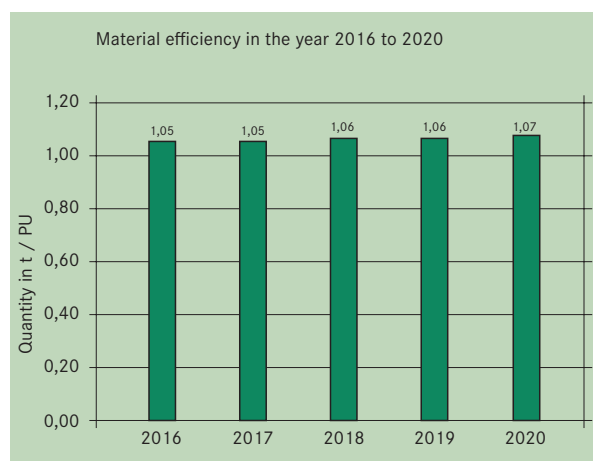
The use of film material is optimized to the greatest possible extent by a very high degree of automation.



Auxiliary materials

The application of auxiliary materials in kind and quantity is depending on the order. According to the demands of the customer, we are using cardboard and cardboard packaging to secure the products during transport.

In our production other auxiliary agents such as cylinder cleaner, chemicals for waste water treatment and materials for maintenance in small quantities are being used.



The material efficiency is composed by the ratio raw material (substrates, colours) and the product quantity.

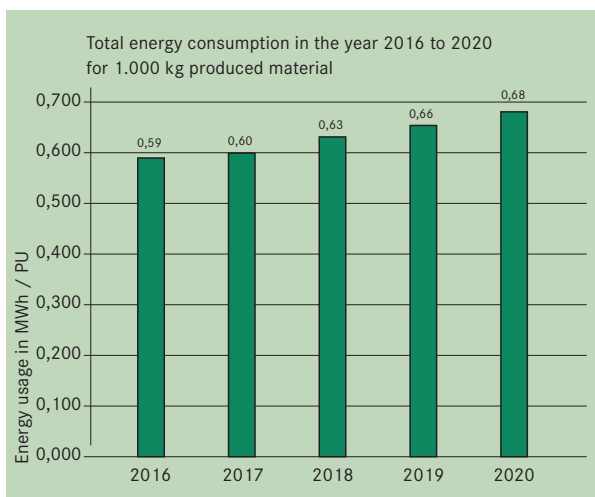
Energy

The use of energy is related to the consumption of non-renewable energies and causes the emissions of CO₂ and other air pollutants. All product lines are solely supplied with natural gas and electric energy. Diesel fuel is required for the in-house stacker traffic and for company vehicles.

By retooling the hall lighting to LEDs in 2016 there were savings to be recorded in total energy consumption.

Despite commissioning of a further assembly line in the area of table cover production in July 2016, energy consumption was maintained at the same level in 2017. The increase in energy consumption in 2019 results from a lower product volume.

The commissioning of additional underfloor heating at the end of 2018 as well as the lower production output and the division of production as a result of short-time work in 2020 lead to an increase in energy consumption from 2019 to 2020.



The energy forms electricity, natural gas and diesel are converted to a uniform energy basis in MWh.

We use an energy conversion of 11.223 kWh/m³ of natural gas and 9.92 kWh/l of diesel fuel.

For 2020 the energy mix for electricity and heating is composed as follows:

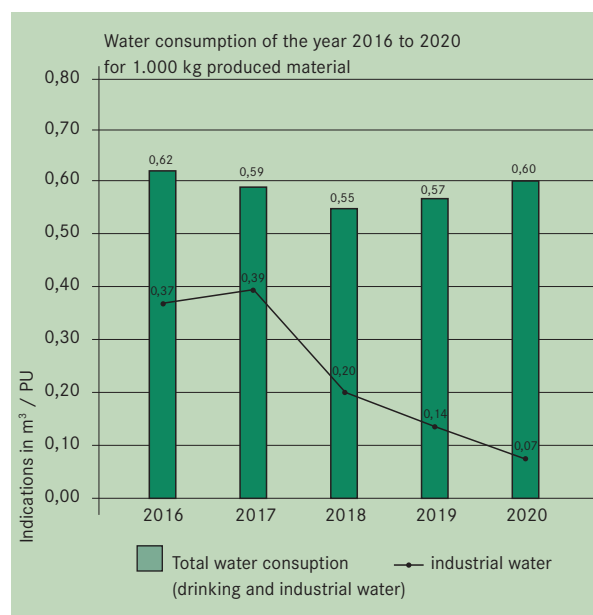
Non-renewable energy: 58 %
Renewable energy: 42 %

The reason for this is the change of electricity supplier from 2019 due to the insolvency of the green electricity supplier. The strategic purchase of green electricity will take place from 2021.

As a result of the operational impact of the corona pandemic, an operational hygiene concept was implemented. There was a separation of production shifts (discontinuous production control). As a result of the shift separation, it was not possible to carry out a continuous production control, which was reflected in the increased start-up and shutdown of productions. This increases the relative energy consumption due to the process in relation to a lower production output. The increase in relative energy consumption in 2020 is therefore not comparable in terms of content with the values of previous years.

Water

The drinking water is exclusively used to dilute printing colours and to use sanitary facilities. For different operating processes, e.g. cleaning of printing sleeves we use industrial water. This industrial water is composed of rainwater and seepage water.



Due to the lack of precipitation since 2018, the consumption of industrial water has fallen sharply. This shortfall had to be compensated by drinking water.

As a result of the operational impact of the corona pandemic, an operational hygiene concept was implemented. As a result of the falling production output and the associated shift separations, more cleaning activities were required in 2020.

This led to a significant increase in the relative water consumption in relation to the production volume.

As a result of the operational impact of the corona pandemic, an operational hygiene concept was imple-

mented. There was a separation of production shifts (discontinuous production control). As a result of the shift separation, it was not possible to carry out a continuous production control, which was reflected in the increased start-up and shutdown of productions.

This increases the relative water consumption due to the process in relation to a lower production output.

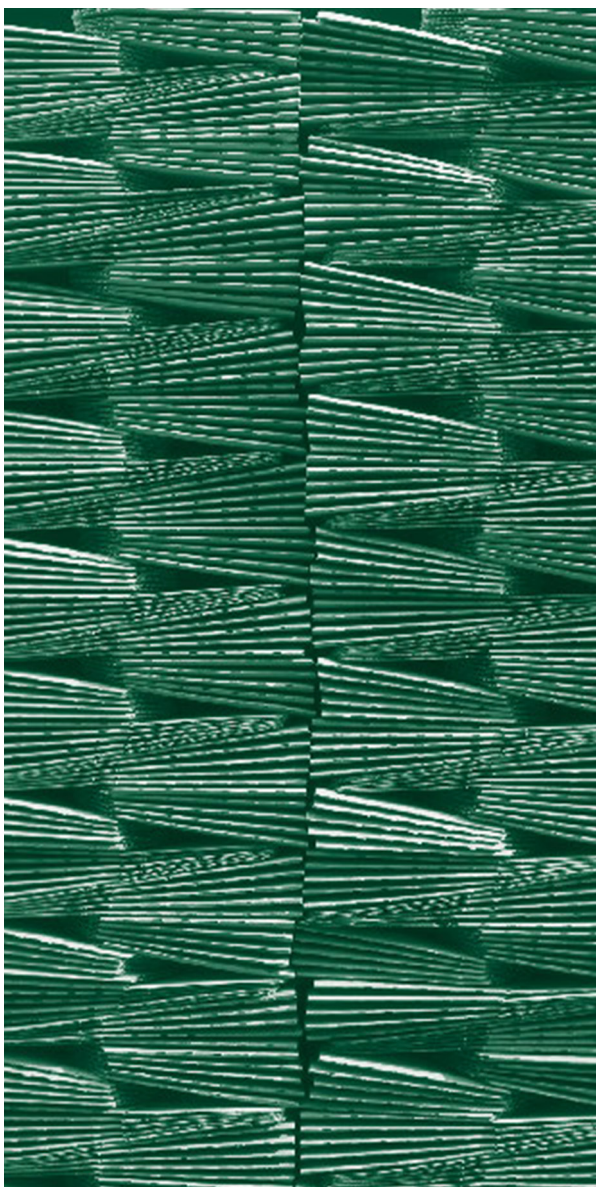
The increase in relative water consumption in 2020 is therefore not comparable in terms of content with the values of previous years.



Explanations of the output key figures

Product quantity

The product quantity only reflects the printed substances and does not include the corresponding packaging; due to the different packaging sizes it had not been possible to make sound comparisons. Only packaging films were included in the consideration. The possible packaging sizes are listed under the item Technical Data.



Waste materials for utilization

Tissue and paper

Tissue and paper waste materials are collected before utilization and are compressed using presses. Small production orders bring about relatively high quantities of waste due to production.

Airlaid/Non-woven

Due to their ingredients (latex compounds) such printing substances are not classified as hazardous materials and are conveyed to utilization. Smaller orders bring about large quantities of waste due to production.

Flax

Production waste of the printing material flax is recycled.

Films

Waste films are arising in the goods income as well as production waste.

Cardboard and sleeve waste

Cardboard and sleeve waste resulting of cardboards and remnants of used printable materials. Each roll is rolled up on a cardboard core. Since the production quantities are increasing, the waste cores are increasing as well.

The core waste is not pressed. Corrugated cardboard is disposed by a cardboard press.

Industrial waste

The industrial waste is similar to household waste.

The waste quantity is depending on the productions orders. If several smaller production orders are processed, there will be a higher quantity of waste due to the setting works. With regard to technical production we are aiming at a controlled reduction of the waste in spite of this tendency.



Sludge from the waste water treatment

Our production waste water is processed in a modern waste water processing system. The contained colourings are separated in a multi-stage process, so that only cleaned production waste water is conveyed to the sewer system. The originating sludge is removed uncritically with regards to the environment by a specialized waste management company.

Suds

This liquid waste is generated during cleaning processes in the area of production. The emulsion is located in a closed container and is regularly collected by a waste management company and sent for recycling. By external disposal our waste water treatment plant can be relieved.

Color waste

Residual colors are widely reused in the production process. Sporadic color waste in the area of napkins and tablecloth production is collected separately and recycled by a waste management company.

Roller cleaner

This liquid is an auxiliary material used for cleaning purposes. After use it is collected and recycled environmentally friendly by a waste management company.

Due to inventory regulation in 2019, the total amount of waste per production unit has risen.

In 2020, the volume of waste increased further due to the division of production.

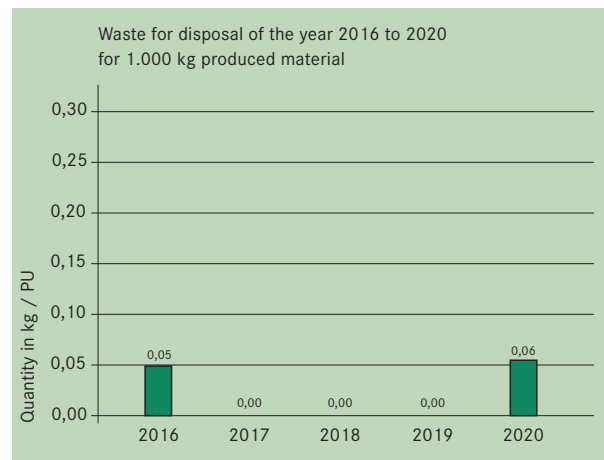
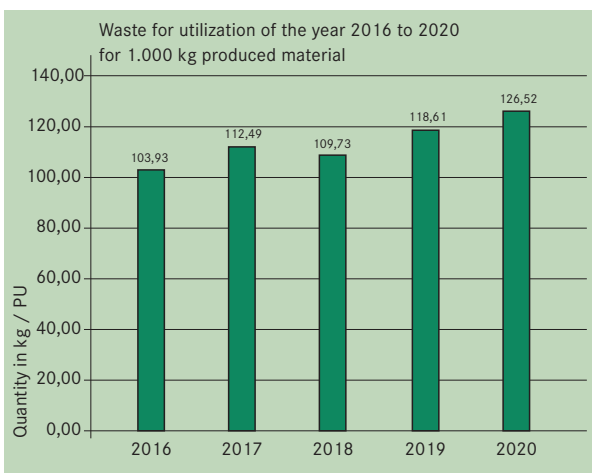
This increase is process-related as a result of short-time work.

As a result of the operational impact of the corona pandemic, an operational hygiene concept was implemented. There was a separation of production shifts (discontinuous production control). As a result of the shift separation, it was not possible to carry out a continuous production control, which was reflected in the increased start-up and shutdown of productions. This increases the relative amount of waste due to the process in relation to a lower production output. The increase in relative amount of waste in 2020 is therefore not comparable in terms of content with the values of previous years.

Waste for disposal

After the updating of waste categories in 2016 there has been a significant shift in the volume of waste towards the waste category of waste for recycling.

Waste for disposal are generated exclusively in the production area.



Until 2016 waste for disposal exclusively consisted of the roller cleaner waste. In the years 2017 to 2019, there was no waste in this waste category. In 2020, the roller cleaner was disposed again.

Environmental program and environmental targets

Environmental aspect	Environmental target	Measure	Date	Responsibility	Status
Water/ Waste water	Watercontrolling	Establishment of a water controlling system for the visualization and, if necessary, conception of further water saving synergies	12/2021	Mr. Wetzke	New
Energy	Reduction of gas consumption	Development of a concept for optimizing heating of storage and production areas	12/2019	Mr. Weber	Completed
		The implementation took place in 2020 by installing a more efficient heating system	12/2020	Mr. Weber	Completed
	Reduction of CO2 emissions by approx.. 4 tons	Conversion of 2 diesel forklifts to electric for the next purchases	12/2022	Mr. Weber	Partially achieved, 1 electric forklift purchased, another one on order
	Reduction of energy consumption by approx. 4,3 MWh	Conversion of the lighting to LED in the office buildings house 1 and 2, staircase house 3 as well as in the factory shop	12/2020	Mr. Weber	Completed
	Drafting of energy contracts	Strategic conversion of the electricity contracts to exclusively green electricity	12/2020	Mrs. Wolf	Completed
	Energy controlling	Development of an energy controlling system for researching and structuring of internal electricity consumption	12/2021	Mr. Wetzke	New

Environmental aspect	Environmental target	Measure	Date	Responsibility	Status
Waste	Waste separation in all areas to stabilize a waste separation rate of at least 90% Reduction of the amount of hazardous waste	Analysis of mixed collected waste, possibly further separation of individual fractions	12/2019	Mrs. Mühl	Reached Waste separation rate 2020 >90%
		Commissioning of parts cleaning machine in the napkin production and treatment of waste water in operational wastewater plant	12/2019	Mr. Weber	Completed
	Reduction of waste in production; waste during production, standardised per 1000 packs: max. 25 packs waste during setup: max. 100 packages	Staff training, Optimization of processes and procedures, technical optimization of the machines	12/2021	Mr. Schiller	Continuation
Noise	Reduction of noise emissions	As a result of the noise measurement, the technical feasibility of reducing noise emissions is examined.	12/2020	Mr. Weber	Checked Will not be pursued further due to profitability considerations
Certification	OK Compost	As a result of the go-green strategy of the entire company, the OK compost certification already applied in the partner plants is also being sought for Paper+Design. In addition to the organisational framework, the production processes will also have to be evaluated.	12/2021	Mr. Wetzke/ Mrs. Mühl	Continuation

Internal and external communication: Contacts

We have a direct dialogue regarding our environmental aspects, our performance and our products. The publication of this environmental statement is part of this dialogue. It will inform our customers and suppliers, employees and the interested public regarding our environmental activities. We hope to be able to discuss any further questions beyond this statement in a direct dialogue with you.

We are glad to receive written or oral requests, demands for information or claims at any time at the Paper+Design GmbH tabletop. Please do not hesitate to contact us under the following address:


Paper+Design GmbH tabletop • An der Heinzebank 15 • 09429 Wolkenstein / OT Hilmersdorf

Our contacts are:

- Managing Director Operations Mr. Joachim Steeg +49 (0) 37369 - 847 0
- Management delegate Mr. Thomas Wetzke

Validation and presentation of the following environmental statement

The signatory, Dr. Reiner Huba

with EMAS environmental verifier registration number DE-V-0251 accredited or licensed for the scope 17.22: Manufacturing of household, hygiene and toilet articles made of cellulose paper and cardboard 

declares to have verified whether the site or the whole organisation as indicated in the environmental statement of the organisation Paper+Design GmbH tabletop, An der Heinzebank 15, 09429 Wolkenstein

with registration number DE-123-00058 meet all requirements of Regulation (EC) No 1221/2009 of the European Parliament and of the Council of 25 November 2009 on the voluntary participation by organisations in a Community eco-management and audit scheme (EMAS) as well as VO (EC) 2017/1505.

By signing this declaration, I declare that:

- the verification and validation has been carried out in full compliance with the requirements of Regulation (EC) No 1221/2009 as well as VO (EC) 2017/1505,
- the outcome of the verification and validation confirms that there is no evidence of non-compliance with applicable legal requirements relating to the environment,
- the data and information of the environmental statement of the organisation reflect a reliable, credible and correct image of all the organisations activities, within the scope mentioned in the environmental statement.

This document is not equivalent to EMAS registration. EMAS registration can only be granted by a Competent Body under Regulation (EC) No 1221/2009. This document shall not be used as a stand-alone piece of public communication.

Kirchheimbolanden, dated 04.02.2021



Dr. Reiner Huba, Environmental verifier, DE-V-0251

We will publish the next updated environmental statement in 2022.

Terms and abbreviations

ISO 14001

International standard for organization and application of environmental management systems. It is possible to certify companies by means of this standard.

EMAS III

The European regulation (EC) number 1221/2009 is the basis which makes requirements regarding the organization and application of the environmental management systems. EMAS III goes beyond the demands of ISO 14001 by having the participating company published its environmental performances in terms of environmental statements. Companies are validated according to EMAS III.

TCF

“Totally Chlorine Free“ means that the pulp been whitened without using chlorine/chlorine compounds. All printing substrates which are used in our production are TCF.

Tissue

Dry creped, multi-layer compound paper produced in a paper machine made of pulp or ground wood of little grammage.

FSC®

The FSC® (Forest Stewardship Council®) was founded in 1993 as a result of the Rio Summit. The FSC® is a non-governmental, non-profit organization which speaks for an environmentally friendly, socially acceptable and economically sustainable usage of the woods on the earth. The organization is supported worldwide by environmental organizations, trade unions, lobbyists of indigenous people, as well as several companies of the forestry and timber industry.


Please find further information under www.fsc.org

SWAN Label

The Nordic Ecolabel is the official ecolabel of the Nordic countries and was established by the Nordic Council of Ministers in 1989. It is a voluntary ecolabel for products and services and is internationally accepted. The objective of the ecolabelling is the support of a sustainable environmentally conscious behaviour of consumers.

Please find further information under www.nordic-ecolabel.org

IFS HPC

The IFS standards are integrated international food, product and service standards which make sure that companies which are certified according to the IFS standards are producing products which comply with the specifications agreed with the customer. The standards help to implement and ensure the food or product safety and quality of the sold products or rendered services and give all producers or service providers uniform and identical guidelines which their customers expect. 

Please find further information under: www.ifs-certification.com

Sleeve

Designation for Flexo printing plates made of rubber.

Paper

All used kinds of paper are manufactured 100% of recycling papers.

Airlaid

Pulp which is additionally hardened using binding agents.

Non-woven

Area-measured material similar to paper which is resulting without previous formation of yarn by bringing together and compacting of fibres.

Flax

Made of flax fibers, biodegradable nonwoven.

Paper + Design

tabletop®

Paper+Design GmbH tabletop

An der Heinzebank 15

D - 09429 Wolkenstein / OT Hilmersdorf

Phone: +49(0) 37 369 - 84 70

Fax: +49(0) 37 369 - 84 720

Internet: www.paper-design.de

E-Mail: info@paper-design.de